

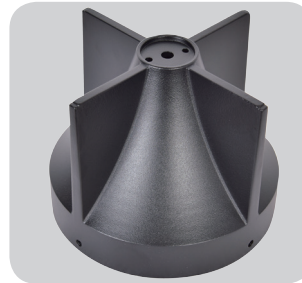
# DLW-LED-051



**A**

**B**

**C**



Die casting reflector



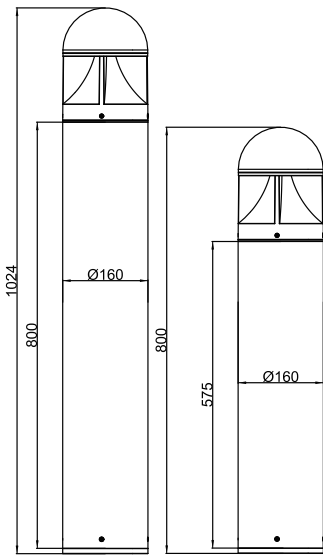
Die casting heatsink



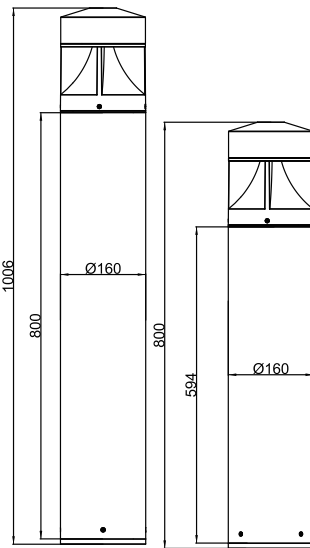
Opal PC diffuser



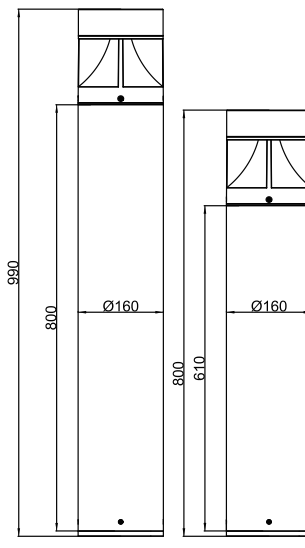
Frosted PC diffuser



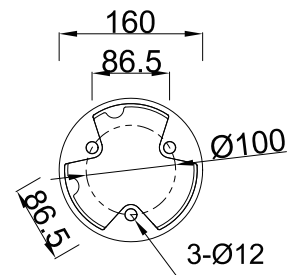
**A**



**B**



**C**



## Application:



Walkways



Parks and Gardens



Car parks



Prestigious

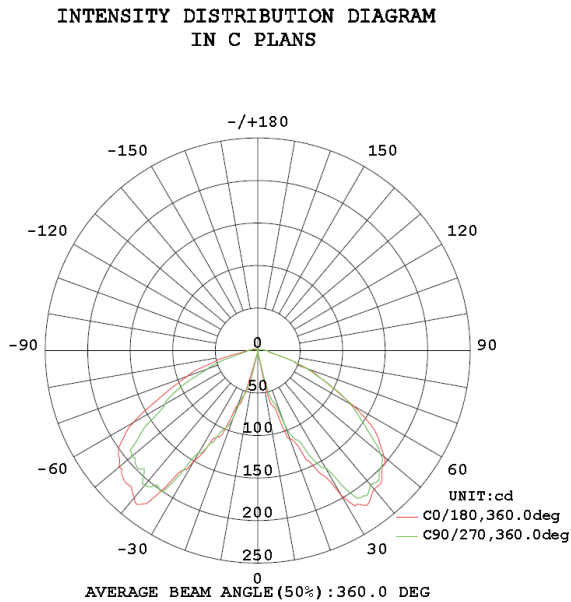


Retail



Amenity

## Distribution:



## Features:

- Main body is made of Die-casting aluminum alloy with Extruded aluminum alloy.
- The diffuser is a opal or frosted anti-UV polycarbonate for high efficiency and vandal resistance.
- Lumileds 2835/3030 led chip and Tridonic driver as regular, Sosen, Meanwell, Osram, driver options.
- Easy access to LED and driver via a removable head.
- 2700-6500K color temperature options.
- Tamper proof fixings for increased vandal resistance.
- Anti-UV electrostatic powder spraying, regular color: Black, Silver, RAL7043, RAL7016
- IP65 rating water and rust proof protection.
- IK08 rating housing protection.
- Warranty is 3-5 years.

## Specification:

Item No.	LED	Lumens	Wattage	CCT	CRI
DLW-LED-051-10W	Lumileds 2835	450LM	10W	2700-6500K	Ra≥80
DLW-LED-051-14W	Lumileds 2835	630LM	14W	2700-6500K	Ra≥80
DLW-LED-051-20W	Lumileds 2835	829LM	20W	2700-6500K	Ra≥80
DLW-LED-051-24W	Lumileds 2835	983LM	24W	2700-6500K	Ra≥80
DLW-LED-051-30W	Lumileds 3030	1243LM	30W	2700-6500K	Ra≥80